



OUTDOOR

Catalog



WHAT'S INSIDE

AREA LIGHTS

- 5 SELECTION GUIDE
- 6 SKYLINE AREA LIGHT
- 8 VIEWPOINT AREA LIGHT

FLOOD LIGHTS

- 11 SELECTION GUIDE
- 12 SKYLINE FLOOD LIGHT
- 14 VIEWPOINT FLOOD SERIES
- 16 CONVERTAFLOOD

WALL PACKS

- 19 SELECTION GUIDE
- 20 SKYLINE WALL MOUNT
- 21 FULL CUTOFF WALL PACK
- 22 SLIM WALL PACK
- 23 OW SERIES WALL PACK

CANOPY / PARKING GARAGE

- 25 SELECTION GUIDE
- 26 UFO PARKING GARAGE
- 28 SQUARE CANOPY & PARKING GARAGE



BOLLARDS

31 BOLLARDS

POLES

33 SQUARE STEEL POLES

34 ROUND STEEL POLES

35 BRACKETS





AREA LIGHTS

OUTDOOR

SELECTION GUIDE



SKYLINE AREA LIGHT (SAS/SAM)

VIEWPOINT AREA LIGHT (VAS/VAM)

SUITABLE APPLICATIONS

| | | |
|---------------------|---|---|
| PARKING LOT | ✓ | ✓ |
| CAR DEALERSHIP | ✓ | ✓ |
| PARKING STRUCTURE | ✓ | ✓ |
| DISTRIBUTION CENTER | ✓ | ✓ |
| EDUCATION | ✓ | ✓ |
| PARKS | ✓ | ✓ |
| ROADWAYS | ✓ | ✓ |
| RETAIL | ✓ | ✓ |
| HOSPITALITY | ✓ | ✓ |
| HOSPITAL | ✓ | ✓ |

FEATURES & PERFORMANCE

| | | |
|--------------------------|--|--|
| LUMEN PACKAGES | Small: 6L, 9L, 12L, 15L, 18L Medium: 24L, 30L, 36L, 42L | Small: 14L, 17L, 21L Medium: 21L, 24L, 28L or 33L, 37L, 42L |
| EFFICACY (lm/W) UP TO | 165 LPW | 165 LPW |
| ROTATABLE OPTICS | ✓ | ✓ |
| CCT OPTIONS | 3K, 4K, 5K | 4K, 5K |
| DISTRIBUTIONS | T2, T3, T4, T5S, FTA (Forward Throw Automotive), Flood - Medium, Wide, Very Wide + Back Light Control | T3, T4, T5 |
| VOLTAGE | 120-277V, 347-480V | 120-277V, 347-480V |
| MOUNTING OPTIONS | Fixed Pole Mount, Adj. Pole Mount, Adj. Slip Fitter, Mast Arm, Fixed Wall Mount, Adj. Wall Mount, Trunnion + Round Poles | Adjustable Pole Mount & Adjustable Slip Fitter |
| FINISHES | Black, White, Silver, Bronze & Custom | Bronze Standard; Upcharge for Black, White, & Silver |
| DISTRIBUTION PERFORMANCE | Very High Spacing & Uniformity | Intermediate Spacing & Uniformity |
| SURGE PROTECTION | 6kV Standard, Optional 10kV & 20kV | 4kV Standard, Optional 10kV & 20kV |
| LIFE | L70>100k hours | L70>100k hours |
| AMBIENT RANGE | -40° to +50°C | -40° to +50°C |
| IP RATINGS | IP66 | IP66 |
| BAA COMPLIANT | ✓ | |
| DLC | Premium | Premium |

BASIC CONTROLS

| | | |
|-------------------------------|--|--|
| CONTROL RECEPTACLE | 3-Pin or 7-Pin | 3-Pin or 7-Pin |
| PHOTOCELL | Twist lock | Twist lock |
| FIELD ADJUSTABLE OUTPUT (FAO) | ✓ | |
| OCCUPANCY SENSOR | Field Adjustable Bluetooth Programmable Sensor | Field Adjustable Bluetooth Programmable Sensor |

ADVANCE GROUPING CONTROLS

| | | |
|-----------|------------------------------------|-----------------------------|
| ENLIGHTED | Integral or via control receptacle | Via Control Receptacle Only |
| SYNAPSE | Integral or via control receptacle | Via Control Receptacle Only |

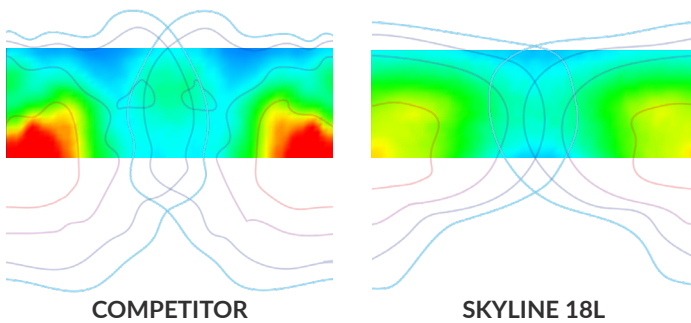
SKYLINE AREA LIGHT

FEATURES

- Specification-grade diecast aluminum housing
- Powder coat finishes: bronze (BRZ), black (BLK), silver (SLV) and white (WHT)
- Custom color finishes available
- 5 Optical distributions with highest uniformity and application targeted performance in its class
- Factory rotatable type 2, 3, 4, 5 square, and automotive front row optics
- 9 Different optional mounting methods (3G rated)
- Single fastener hinged door driver access
- PIR occupancy, photocell, and bi-level dimming sensors available
- 3-Pin and 7-Pin ANSI C136.41 control receptacle options
- Calculated L80 >100,000 hours

HIGHEST UNIFORMITY IN ITS CLASS!

400W HID COMPETITOR VS. SKYLINE 18L



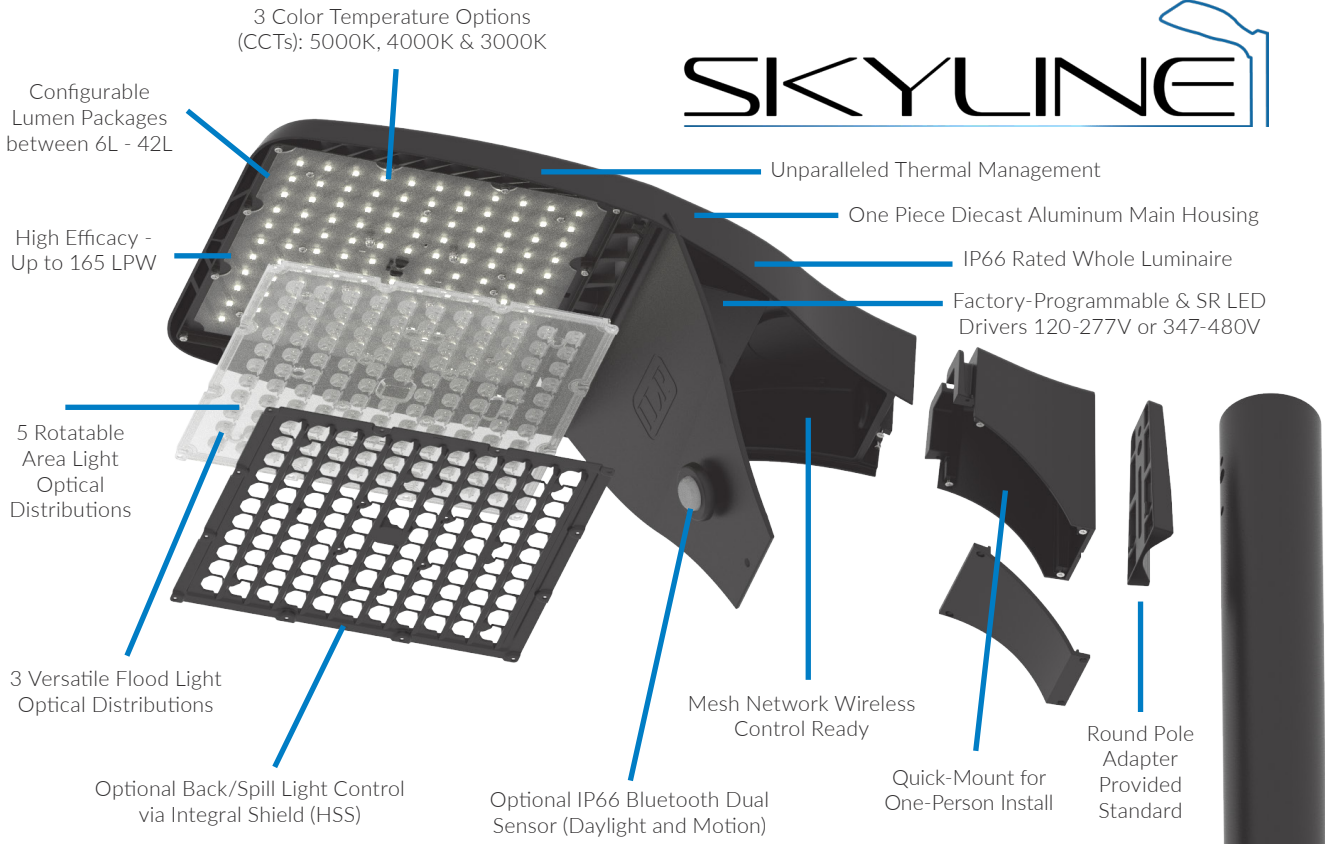
SUITABLE APPLICATIONS

- Parking Lots
- Car Dealerships
- Parking Structures
- Education
- Parks
- Distribution Centers
- Roadways
- Shopping Centers
- Warehouses



LED SYSTEMS INFO

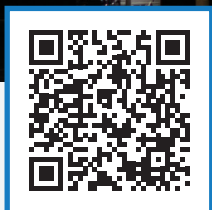
| PART NUMBER | LUMENS | WATTS | LM/W | REPLACES |
|-----------------|-----------|-------|----------|----------|
| SAS-6L-U-40-T4 | 6,532 lm | 46W | 142 lm/W | 175W MH |
| SAS-9L-U-40-T4 | 9,332 lm | 70W | 133 lm/W | 250W MH |
| SAS-12L-U-40-T4 | 12,301 lm | 88W | 139 lm/W | 320W MH |
| SAS-15L-U-40-T4 | 15,219 lm | 110W | 138 lm/W | 400W MH |
| SAS-18L-U-40-T4 | 18,341 lm | 137W | 134 lm/W | 400W MH |
| SAM-24L-U-40-T4 | 23,370 lm | 167W | 134 lm/W | 400W MH |
| SAM-30L-U-40-T4 | 28,918 lm | 220W | 131 lm/W | 750W MH |
| SAM-36L-U-40-T4 | 34,329 lm | 235W | 146 lm/W | 750W MH |
| SAM-42L-U-40-T4 | 39,430 lm | 272W | 145 lm/W | 1000W MH |



ORDERING GUIDE

*Options & Accessories are not shown. Please see the cut sheet on our website at ilp-inc.com or scan the QR code below.

| SERIES | LUMENS | VOLTAGE | CCT | DISTRIBUTION | ORIENTATION | MOUNTING | FINISH |
|-----------|---------------|------------------------------|---|----------------------------|------------------------|--|--------|
| SAS Small | 6L 6,000 lm | U 120-277v | 30 3000K | T2 T2 - Type 2 | (BLANK) - Standard | SLPF Adjustable Slip Fitter | BRZ |
| | 9L 9,000 lm | HV 347-480v | 40 4000K | T3 T3 - Type 3 | L Optics Rotated Left | UMB Universal Fixed | BLK |
| | 12L 12,000 lm | | 50 5000K | T4 T4 - Type 4 | R Optics Rotated Right | UMB/R Universal Mount Sqr/Rnd pole 3"-6" | WHT |
| | 15L 15,000 lm | T5S Type 5 Square | UAB Universal Adjustable | SLV | | | |
| | 18L 18,000 lm | FTA Forward Throw Automotive | UAB/R Universal Adjustable Sqr/Rnd pole 3"-6" | WFM Wall Fixed Mount | | | |
| SAM Med | 24L 24,000 lm | WAM Wall Adjustable Mount | TRN Trunnion Mount | HTM Horizontal Tenon Mount | | | |
| | 30L 30,000 lm | | | | | | |
| | 36L 36,000 lm | | | | | | |
| | 42L 42,000 lm | | | | | | |



For more helpful information

SCAN ME

Gain access to our flyer, brochure, IES files, and more by scanning the product's QR code.

VIEWPOINT AREA LIGHT

FEATURES

- One piece bronze diecast aluminum main housing
- Excellent application targeted performance
- Factory rotatable type 3, 4 and 5 optical distributions
- High efficacy - up to 165 LPW
- 3 and 7 pin control receptacle options
- Optional wireless controls integrated via 7 pin receptacle
- BLE PIR occupancy, photocell and bi-level
- Dimming sensor options
- 3G adjustable pole mount or slipfitter mounting options
- Lumen selectable - 3 positions per SKU
- 4000K and 5000K CCT
- -40°F to 104°F ambient temperature range
- Calculated L70 >100,000 Hours



SUITABLE APPLICATIONS

- Parking Lots
- Car Dealership
- Public & Municipal Park
- Roadways

LED SYSTEMS INFO

| PART NUMBER | LUMENS | WATTS | LM/W | REPLACES |
|-----------------|-----------|-------|----------|----------|
| VAS-14L-U-40-T4 | 16,254 lm | 103W | 154 lm/W | 400W MH |
| VAS-17L-U-40-T4 | 18,276 lm | 127W | 145 lm/W | 400W MH |
| VAS-21L-U-40-T4 | 21,373 lm | 148W | 145 lm/W | 400W MH |
| VAM-21L-U-40-T4 | 22,818 lm | 150W | 155 lm/W | 400W MH |
| VAM-24L-U-40-T4 | 25,233 lm | 173W | 148 lm/W | 400W MH |
| VAM-28L-U-40-T4 | 28,699 lm | 197W | 148 lm/W | 750W MH |
| VAM-33L-U-40-T4 | 36,569 lm | 238W | 153 lm/W | 750W MH |
| VAM-37L-U-40-T4 | 38,395 lm | 263W | 146 lm/W | 750W MH |
| VAM-42L-U-40-T4 | 41,258 lm | 289W | 143 lm/W | 1000W MH |



ORDERING GUIDE

*Options & Accessories are not shown. Please see the cut sheet on our website at ilp-inc.com or scan the QR code below.

| SERIES | LUMENS | VOLTAGE | CCT | DISTRIBUTION | ORIENTATION | MOUNTING | FINISH |
|--------|--|-------------|----------|--------------|------------------------|------------------------------------|--------|
| VAS | 14L/17L/21L 14/17/21,000 lm selectable | U 120-277v | 30 3000K | T3 Type 3 | (BLANK) Standard | SLPF 2 3/8" Adjustable Slip Fitter | BRZ |
| | | HV 347-480v | 40 4000K | T4 Type 4 | L Optics Rotated Left | PMB Adjustable Pole Mount | |
| | | | 50 5000K | T5 Type 5 | R Optics Rotated Right | | |
| VAM | 21L/24L/28L 21/24/28,000 lm selectable | | | | | | |
| | 33L/37L/42L 33/37/42,000 lm selectable | | | | | | |



For more helpful information
SCAN ME

Gain access to our flyer, brochure, IES files, and more by scanning the product's QR code.

NOTES



Visit us online at
ILP-INC.COM

If you have any questions regarding products in this section, please go online to ilp-inc.com or reach out to one of our sales reps for more information and pricing.



FLOOD LIGHTS

OUTDOOR



SELECTION GUIDE

| | |
|-------------------------------|-------------------------|
| SUITABLE APPLICATIONS | AREA LIGHTING |
| | LANDSCAPE |
| | FLAG POLE |
| | WALL WASH |
| | SIGNAGE |
| | ELEVATION ILLUMINATION |
| | CANOPY LIGHTING |
| | FACADE LIGHTING |
| | GENERAL PURPOSE |
| | PERIMETER SITE LIGHTING |
| FEATURES & PERFORMANCE | HOUSING SIZES |
| | LUMEN PACKAGES |
| | LPW (UP TO) |
| | LUMEN SELECTABLE |
| | CRI |
| | CCT OPTIONS |
| | DISTRIBUTIONS |
| | VOLTAGES |
| | MOUNTING |
| | SURGE PROTECTION |
| | LED LIFETIME |
| | AMBIENT RANGE |
| | RATINGS |
| | BAA COMPLIANT |
| | FINISHES |
| | DLC |
| | BASIC CONTROLS |
| FAO (FIELD ADJUSTABLE OUTPUT) | |
| OCCUPANCY SENSOR | |
| ADVANCE GROUPING CONTROLS | ENLIGHTED |
| | SYNAPSE |



**SKYLINE FLOOD
(SFS/SFM)**

**VIEWPOINT FLOOD SERIES
(VFC/VFS/VFM/VFL/VFX)**

**CONVERTAFLOOD
(CFS/CFM)**

| | | |
|---|--|---|
| ✓ | ✓ | |
| | ✓ | ✓ |
| | ✓ | ✓ |
| | ✓ | ✓ |
| | ✓ | ✓ |
| | ✓ | ✓ |
| ✓ | ✓ | ✓ |
| ✓ | ✓ | ✓ |
| 2 | 5 | 2 |
| Small: 6L-18L Medium: 24L-42L | Compact: 2L Small: 5L-7L Medium: 10L-14L Large: 20L-30L Extra Large: 40L | Small: 4L Medium: 6L-10L |
| 165 LPW | 151 LPW | 130 LPW |
| | 4 Fixed Levels per Lumen Package | Rotary Knob Continuous Adjustability |
| >70 | >70 | >80 |
| 3K, 4K, 5K | 3K, 4K, 5K, CCT Selectable | 4K, 5K |
| Medium, Wide Forward Throw, Very Wide | Medium or Wide | 3x3, 4x4, 5x5, 7x6 |
| 120-277V or 347-480V | 120-277V or 347-480V | 120-277V |
| Adjustable Pole Mount, Adjustable Slip Fitter, Adjustable Wall Mount, Trunnion | Knuckle, Knuckle with Tenon Adapter, Adjustable Slip Fitter, Pole Mount | Knuckle, Knuckle with Tenon Adapter, Trunnion |
| 6kV | 6kV (VFC 2.5kV) | 2.5kV |
| L80 > 100K | L70 > 100K | L70 > 100K |
| -40 to +50°C | -40 to +50°C (VFL-30L +45°C) | -40 to +50°C |
| IP66 | IP66 | IP66 |
| ✓ | | |
| Bronze, Black, White, Silver & Custom Color | Bronze Standard; Upcharge for Black, White, & Silver | Bronze, Black, White |
| Premium | Premium | Standard & Premium |
| Electronic Pencil Photocell | Embedded Electronic Photocell | Embedded Electronic Photocell |
| Optional | ✓ | |
| Field Adjustable Bluetooth Programmable Sensor | | |
| Integrated | Via Control Receptacle | |
| Integrated | Via Control Receptacle | |

SKYLINE FLOOD LIGHT

FEATURES

- Specification-grade diecast aluminum housing
- Powder coat finishes: bronze (BRZ), black (BLK), silver (SLV) and white (WHT)
- Custom color finishes available
- High performance medium, wide, and very wide forward optic distributions
- Universal adjustable pole mount allows for 1 man installation on existing poles with no drilling required
- 5 different optional mounting methods (3G rated)
- Single fastener hinged door driver access
- 120–277V universal voltage or 347–480V high voltage
- PIR occupancy, photocell, and bi-level dimming sensors available
- 3-pin and 7-pin ANSI C136.41 control receptacle options
- Wireless control integrated luminaire
- Calculated L80 >100,000 hours

SKYLINE



WHY SKYLINE?

The Skyline Flood light features a slim profile form cohesively matching to its Area light counterpart with the addition of 4 adjustable tilt mounting methods and 3 optical distributions specifically designed for illuminating large areas. Designed for both new construction and retrofit, the Skyline provides a one-for-one solution for replacing legacy metal halide or high-pressure sodium luminaires while providing industry leading application targeted performance. Priced for a quick ROI, its cost-effective diecast aluminum housings comes in 2-sizes and DLC Premium efficacies with up to 165 LPW, making it the best choice for low acquisition cost and high energy savings.

SUITABLE APPLICATIONS

- Parking Lots
- Parking Structures
- Parks
- Education
- Hospitals
- Car Dealerships
- Distribution Warehouses
- Shopping Centers



LED SYSTEMS INFO

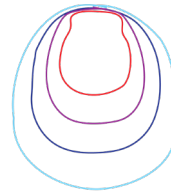
| PART NUMBER | LUMENS | WATTS | LM/W | REPLACES |
|-------------|-----------|-------|----------|----------|
| SFS-6L-VW | 7,508 lm | 46W | 163 lm/W | 175W MH |
| SFS-9L-VW | 10,726 lm | 70W | 153 lm/W | 250W MH |
| SFS-12-VW | 14,231 lm | 88W | 161 lm/W | 320W MH |
| SFS-15-VW | 17,492 lm | 110W | 159 lm/W | 400W MH |
| SFS-18-VW | 21,080 lm | 137W | 154 lm/W | 400W MH |
| SFS-24-VW | 27,337 lm | 167W | 164 lm/W | 400W MH |
| SFS-30-VW | 33,237 lm | 220W | 151 lm/W | 750W MH |
| SFS-36-VW | 39,457 lm | 235W | 168 lm/W | 750W MH |
| SFS-42-VW | 45,319 lm | 272W | 167 lm/W | 100W MH |

FLOOD OPTIC PATTERNS

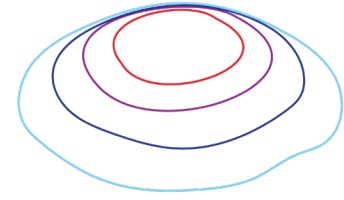
Skyline LED flood lights have a comprehensive offering of flood photometric distributions that provide superior illumination. Options include an innovative “wide forward throw” distribution that evenly illuminates large sites that rely on perimeter lighting, a “very wide” distribution for maximum coverage, and a “medium” distribution for highlighting specific objects or areas.



Medium



Wide Forward
Throw With 45° Tilt



Very Wide
With 45° Tilt

MOUNTING METHODS



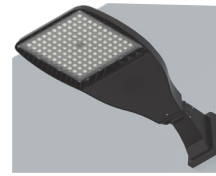
UAB

Universal Adjustable Mount Bracket
(Round or Square Pole)



SLPF

2 3/8" Adjustable Slip
Fitter



WAM

Wall Adjustable Mount Bracket



TRN

Trunnion Mount

ORDERING GUIDE

*Options & Accessories are not shown. Please see the cut sheet on our website at ilp-inc.com or scan the QR code below.

| SERIES | LUMENS | VOLTAGE | CCT | DISTRIBUTION | MOUNTING | FINISH |
|------------|---------------|-------------|----------|-----------------|---|--------|
| SFS Small | 6L 6,000 lm | U 120-277v | 30 3000K | MD Medium | SLPF Adjustable Slip Fitter | BRZ |
| | 9L 9,000 lm | HV 347-480v | 40 4000K | WD Wide Forward | UAB Universal Adjustable | BLK |
| | 12L 12,000 lm | | 50 5000K | VW Very Wide | UAB/R Universal Adjustable Sqr/Rnd pole 3"-6" | WHT |
| | 15L 15,000 lm | | | | WAM Wall Adjustable Mount | SLV |
| | 18L 18,000 lm | | | | TRN Trunnion Mount | |
| SFM Medium | 24L 24,000 lm | | | | | |
| | 30L 30,000 lm | | | | | |
| | 36L 36,000 lm | | | | | |
| | 42L 42,000 lm | | | | | |



For more helpful information
SCAN ME

Gain access to our one pager, brochure and more by scanning the product's QR code.

VIEWPOINT FLOOD SERIES

FEATURES

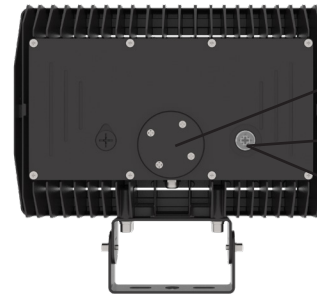
- Low-profile diecast aluminum housings available in 5 sizes
- Bronze polyester powder coat finish (standard)
- Fully adjustable NEMA 7×6 distribution or optional NEMA 5×4
- Adjustable knuckle, trunnion, slip fitter, pole, and tenon adapter mounting options
- 3000K, 4000K and 5000K CCT selectable via integral window selector
- 4-level field adjustable output (FAO) allows individual luminaire lumen output control
- Embedded electronic photocell with override switch (standard)
- 120–277V universal voltage or 347V–480V high voltage
- Calculated L70 >100,000 hours



SUITABLE APPLICATIONS

- Landscape
- Flag Pole
- Wall Wash
- Signage
- Spot and Flood Light
- Elevation Illumination

INTEGRATED FEATURES



- Optional Twist Lock NEMA 3-PIN Photocontrol Receptacle (VFM - VFX)
- Lumen, & Photocell Quick Access Switches
- Electronic Photocell (120-277V)

WHY VIEWPOINT?

With its sleek, low-profile design, the Viewpoint Flood Series discretely enhances and blends into site surroundings, while providing industry-leading features and performance.



LED SYSTEMS INFO

| PART NUMBER | LUMENS | WATTS | LM/W | REPLACES |
|------------------|-----------|-------|----------|----------|
| VFC-2L-U-CCTS-W | 2,189 lm | 16W | 142 lm/W | 70W MH |
| VFS-5L-U-CCTS-W | 5,575 lm | 42W | 140 lm/W | 100W MH |
| VFS-7L-U-CCTS-W | 7,147 lm | 54W | 138 lm/W | 150W MH |
| VFM-10L-U-CCTS-W | 11,464 lm | 83W | 145 lm/W | 175W MH |
| VFM-14L-U-CCTS-W | 14,298 lm | 107W | 139 lm/W | 250W MH |
| VFL-20L-U-40-W | 20,525 lm | 147W | 140 lm/W | 400W MH |
| VFL-30L-U-40-W | 27,666 lm | 196W | 141 lm/W | 750W MH |
| VFX-40L-U-40-W | 43,981 lm | 291W | 152 lm/W | 1000W MH |

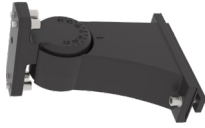
MOUNTING OPTIONS



TRN
Trunion
VFC, VFS, VFM (Standard),
VFL (Standard), VFX (Standard)



KNK
Knuckle
VFC (Standard), VFS (Standard)



PMB
Adjustable Pole
Mount
VFM, VFL, VFX



SLPF
2-3/8" Adjustable
Slip Fitter
VFM, VFL, VFX

ORDERING GUIDE

*Options & Accessories are not shown. Please see the cut sheet on our website at ilp-inc.com or scan the QR code below.

| SERIES | LUMENS | VOLTAGE | CCT | DISTRIBUTION | MOUNTING | FINISH |
|-------------|----------------------------------|-------------|---|---|---|--------|
| VFC Compact | 2L 2,000 lm | U 120-277v | CCTS CCT Selectable 3K, 4K, 5K | W 7x6 Wide | KNK 1/2" Knuckle Mount (Standard) | BRZ |
| | | | | M 5x5 Medium | TRN Trunion Mount | BLK |
| | | | | | TR Knuckle with 2-3/8" vertical tenon adapter | WHT |
| VFS Small | 5L 5,000 lm 7L 7,000 lm | | | | KNK 1/2" Knuckle Mount (Standard) | |
| | | | | | TRN Trunion Mount | |
| | | | | TR Knuckle with 2-3/8" vertical tenon adapter | | |
| VFM Medium | 10L 10,000 lm 14L** 14,000 lm | | | | KNK 1/2" Knuckle Mount | |
| | | | | | TRN Trunion Mount (Standard) | |
| | | | | SLPF 2-3/8" Adjustable Slip Fitter | | |
| | | | | PMB Pole Mount Bracket | | |
| VFL Large | 20L 20,000 lm 30L 30,000 lm | U 120-277v | 40 4000K CCT | | TRN Trunion Mount (Standard) | |
| | | HV 347-480v | 50 5000K CCT | | SLPF 2-3/8" Adjustable Slip Fitter | |
| | | | | PMB Pole Mount Bracket | | |
| VFX X-Large | 40L 40,000 lm | | | | TRN Trunion Mount (Standard) | |
| | | | | | SLPF 2-3/8" Adjustable Slip Fitter | |
| | | | | | PMB Pole Mount Bracket | |

**Available in high voltage 347-480V in dedicated 4K or 5K CCT. See cut sheet for more details.



For more helpful information
SCAN ME

Gain access to our brochure, IES files, and more by scanning the product's QR code.

CONVERTAFLOOD

FEATURES

- Architectural diecast aluminum housing
- Standard polyester powder coat finishes: bronze (BRZ), black (BLK), and white (WHT)
- Field swappable NEMA optical distributions:
 - CFS: NEMA 7x6 (standard), 5x5 and 4x4
 - CFM: NEMA 7x6 (standard), 5x5, 4x4, and 3x3
- Mounting:
 - ½" Knuckle (standard)
 - Trunnion mount bracket
 - 2 ¾" Tenon cap option
- Embedded electronic photocell (standard)
- Pushbutton convertible top provides toolless access:
 - Easily swap optics
 - Field adjustable output (FAO) allows individual luminaire lumen output control (standard)
 - Photocell override switch
- Vandal resistant latch via optional locking screw
- Hood distribution options available
- 120-277V Universal Voltage
- 4000K and 5000K CCT (standard)
- Calculated L70 >100,000 hours



Trunnion Mount Bracket

CFS



SUITABLE APPLICATIONS

- Landscape
- Signage
- Flag Pole
- Spot & Flood Light
- Wall Wash
- Elevation Illumination

LED SYSTEMS INFO

| PART NUMBER | LUMENS | WATTS | LM/W | REPLACES |
|--------------|-----------|-------|----------|----------|
| CFS-36W-U-40 | 4,183 lm | 35W | 119 lm/W | 150W MH |
| CFM-52W-U-40 | 6,285 lm | 57W | 111 lm/W | 175W MH |
| CFM-85W-U-40 | 10,630 lm | 85W | 125 lm/W | 250W MH |

ORDERING GUIDE

*Options are not shown. Please see the cut sheet on our website at ilp-inc.com or scan the QR code below.

| SERIES | WATT | DRIVER | COLOR | DISTRIBUTION | FINISH |
|----------------------|------------|------------|-------|-----------------------|--------------------------------------|
| CFS CF Series Small | 36W | U 120-277V | 50 | N76/S 7x6 Optic (CFS) | BRZ Bronze WHT White BLK Black |
| CFM CF Series Medium | 52W 85W | | 40 | N76/M 7x6 Optic (CFM) | |

DISTRIBUTION OPTIONS

| | |
|---------|--|
| N33/xxx | NEMA 3Hx3V Optics (xxx=M52 or M85) |
| N44/xxx | NEMA 4Hx4V Optics (xxx=M52 or M85) |
| N55/xxx | NEMA 5Hx5V Optics (xxx=M36, M52, or M85) |

MOUNTING - FIELD INSTALLED

| | |
|-----------|---|
| CF-TR/xxx | 2 ¾" Tenon Adapter (xxx=fixture color) |
| CF-TM/xxx | Trunnion Mounting Bracket (xxx=fixture color) |



For more helpful information
SCAN ME

Gain access to our flyer, cut sheets and more by scanning the product's QR code.

NOTES



Visit us online at
ILP-INC.COM

If you have any questions regarding products in this section, please go online to ilp-inc.com or reach out to one of our sales reps for more information and pricing.



WALL PACKS

OUTDOOR



SELECTION GUIDE



SKYLINE WALL MOUNT (SAS/SAM)

| | | |
|---------------------------|---|--|
| SUITABLE APPLICATIONS | PEDESTRIAN WALKWAYS | |
| | BUILDING ENTRANCES | |
| | MULTI-USE FACILITIES | ✓ |
| | PARKING LOTS | ✓ |
| | STORAGE FACILITIES | ✓ |
| | INSTITUTIONS | ✓ |
| | SCHOOLS | ✓ |
| | LOADING DOCKS | |
| | WAREHOUSES | ✓ |
| | SHOPPING CENTERS | ✓ |
| | HOUSING SIZES | 2 |
| LUMEN PACKAGES | Small: 6L-18L Medium: 24L-42L | |
| LPW (UP TO) | 165 LPW | |
| LUMEN SELECTABLE | No | |
| CRI | >70 | |
| CCT OPTIONS | 3K, 4K, 5K | |
| DISTRIBUTIONS | T2, T3, T4, FTA | |
| DISTRIBUTION PERFORMANCE | Excellent Uniformity and Targeted Performance | |
| IDA | ✓ | |
| VOLTAGES | 120-277V or 347-480V | |
| MOUNTING | Bracket with No Through Drilling | |
| BATTERY BACKUP | | |
| SURGE PROTECTION | 6kV | |
| LED LIFETIME | L80 > 100K | |
| AMBIENT RANGE | -40 to +50°C | |
| RATINGS | IP66 | |
| BAA COMPLIANT | ✓ | |
| FINISHES | Bronze, Black, White, Silver & Custom | |
| DLC | Premium | |
| BASIC CONTROLS | PHOTOCELL | 3/7 Pin Control Receptacle |
| | FAO (FIELD ADJUSTABLE OUTPUT) | 7 -Levels |
| | OCCUPANCY SENSOR | Field Adjustable Bluetooth Programmable Sensor |
| ADVANCE GROUPING CONTROLS | ENLIGHTED | Integrated or via control receptacle |
| | SYNAPSE | Integrated or via control receptacle |



| FULL CUTOFF WALL PACK (WPCS/WPCM) | SLIM WALL PACK (SWP) | OW SERIES WALL PACK (OWS, OWM, OWL) |
|--|--|--|
| ✓ | ✓ | ✓ |
| ✓ | ✓ | ✓ |
| ✓ | ✓ | ✓ |
| ✓ | ✓ | ✓ |
| ✓ | ✓ | ✓ |
| ✓ | ✓ | ✓ |
| ✓ | ✓ | ✓ |
| ✓ | ✓ | ✓ |
| ✓ | ✓ | ✓ |
| ✓ | ✓ | ✓ |
| 2 | 2 | 3 |
| Small: 3L-5L Medium: 3L-11L | Small: 2L-3L Medium: 5L-10L | Small: 1L-4L Medium: 3L-5L, Large: 5L-16L |
| 146 LPW | 150 LPW | 147 LPW |
| No | Optional with FAO | ✓ |
| >70 | >70 | >70 |
| 3K, 4K, 5K | 3K, 4K, 5K CCT Selectable | 3K, 4K, 5K CCT Selectable |
| T2, T3, T4 | T4 | T4 |
| Moderate Uniformity and Targeted Performance | Low Uniformity and Targeted Performance | Low Uniformity and Targeted Performance |
| ✓ | Optional with Hood | Optional |
| 120-277V or 347-480V; Dual Driver | 120-277V or 347-480V | 120-277V or 347-480V |
| Drill Through Back Casting | Bracket with No Through Drilling | Drill Through Back Casting |
| Small: 5W, Medium: 5W-12W; 14W Cold Temp -20°F | Small: None Medium: 10W; 10W Cold Temp -20°F | Small: None, Medium: 5W-10W; 10W Cold Temp -20°F, Large: 5W-10W; 10W Cold Temp -20°F |
| 4kV | 2.5kV | 6kV (2.5kV OWS) |
| L70 > 100K | L70 > 100K | L70 > 100K |
| -40 to +45°C | -40 to +40°C | -40 to +45°C |
| Wet Location | IP65 | IP65 |
| ✓ | | |
| Bronze, Black, White, Silver & Custom | Bronze Standard; Upcharge for Black, White, & Silver | Bronze Standard; Upcharge for Black, White, & Silver (OWM/OWL) |
| Standard/Premium | Premium | Premium |
| Electronic Pencil Photocell | Electronic Pencil Photocell | Electronic Pencil Photocell |
| | 7 -Levels | |
| Field Adjustable Bluetooth Programmable Sensor | Field Adjustable Bluetooth Programmable Sensor | External Field Adjustable Bluetooth Programmable Sensor |
| Integrated | | |
| Integrated | | |

SKYLINE WALL MOUNT

WALL PACKS
SAS/SAM

FEATURES

- Specification-grade diecast aluminum housing
- Powder Coat Finishes: bronze (BRZ), black (BLK), silver (SLV) and white (WHT)
- Custom color finishes available
- Type 2, 3, 4 optical distributions with highest uniformity in their product class
- 3G fixed or adjustable quick wall mount allows for 1 man installation
- Single fastener hinged door driver access
- 120-277V universal voltage or 347-480V High Voltage
- PIR occupancy, photocell, and bi-level dimming sensors available
- 3-pin and 7-pin ANSI C136.41 control receptacle options
- Wireless control integrated luminaire
- 3000K, 4000K and 5000K CCT
- Calculated L80 >100,000 hours



SUITABLE APPLICATIONS

- Parking Lots
- Parking Structure
- Parks
- Education
- Hospitals
- Car Dealerships
- Roadways
- Shopping Centers

LED SYSTEMS INFO

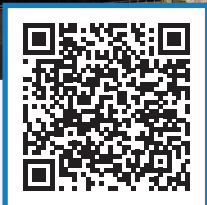
| PART NUMBER | LUMENS | WATTS | LM/W | REPLACES |
|-------------|-----------|-------|----------|----------|
| SAS-6L-40 | 6,876 lm | 46W | 150 lm/W | 175W MH |
| SAS-9L-40 | 9,823 lm | 70W | 140 lm/W | 250W MH |
| SAS-12L-40 | 12,948 lm | 88W | 147 lm/W | 320W MH |
| SAS-15L-40 | 16,020 lm | 110W | 146 lm/W | 400W MH |
| SAS-18L-40 | 19,306 lm | 137W | 141 lm/W | 400W MH |
| SAS-24L-40 | 24,600 lm | 167W | 147 lm/W | 400W MH |
| SAS-30L-40 | 30,440 lm | 220W | 138 lm/W | 750W MH |
| SAS-36L-40 | 36,136 lm | 235W | 154 lm/W | 750W MH |
| SAS-42L-40 | 41,505 lm | 272W | 153 lm/W | 100W MH |



ORDERING GUIDE

*Options & Accessories are not shown. Please see the cut sheet on our website at ilp-inc.com or scan the QR code below.

| SERIES | LUMENS | VOLTAGE | CCT | DISTRIBUTION | MOUNTING | FINISH | | | |
|-----------|---------------|---------------|----------|----------------|----------------------|----------------|----------------|---------------------------|-----|
| SAS Small | 6L 6,000 lm | U 120-277v | 30 3000K | T2 T2 - Type 2 | WFM Wall Fixed Mount | BRZ | | | |
| | 9L 9,000 lm | | | | HV 347-480v | 40 4000K | T3 T3 - Type 3 | WAM Wall Adjustable Mount | BLK |
| | 12L 12,000 lm | | | | 50 5000K | T4 T4 - Type 4 | | WHT | |
| SAM Med | 24L 24,000 lm | 36L 36,000 lm | | | | SLV | | | |
| | 30L 30,000 lm | 42L 42,000 lm | | | | | | | |



For more helpful information
SCAN ME

Gain access to our flyer, IES files and more by scanning the product's QR code.

FULL CUTOFF WALL PACK

FEATURES

- Rugged diecast aluminum housing
- Factory select finishes: bronze (BRZ), black (BLK), silver (SLV), and white (WHT)
- Custom colors finishes available
- Type II, III, and IV optics available
- Cast-in template for mounting directly over a 4" recessed outlet box
- Side hinged full cutoff front frame
- 120-277V universal voltage; 347-480V High Voltage (HV WPCM only)
- Battery backup and cold weather battery options available
- PIR occupancy, photocell, and bi-level dimming sensors available
- Wireless control integrated luminaire
- 3000K, 4000K and 5000K CCT
- Calculated L70 >100,000 hours



enlighted™
A Siemens Company

legrand®

synapse



WALL PACKS
WPCS/WPCM

SUITABLE APPLICATIONS

- Pedestrian Walkways
- Storage Facilities
- Multi-use Facilities
- Industrial Facilities
- Parking Lots
- Institutions
- Building Entrances
- Schools
- Loading Docks

LED SYSTEMS INFO

| PART NUMBER | LUMENS | WATTS | LM/W | REPLACES |
|-------------------------|-----------|-------|----------|----------|
| WPCS-28WLED-UNIV-40-T4 | 3,277 lm | 29W | 115 lm/W | 175W MH |
| WPCS-44WLED-UNIV-40-T4 | 4,618 lm | 42W | 109 lm/W | 250W MH |
| WPCM-28WLED-UNIV-40-T4 | 3,513 lm | 27W | 131 lm/W | 175W MH |
| WPCM-44WLED-UNIV-40-T4 | 4,930 lm | 40W | 124 lm/W | 250W MH |
| WPCM-75WLED-UNIV-40-T4 | 8,344 lm | 74W | 113 lm/W | 400W MH |
| WPCM-105WLED-UNIV-40-T4 | 11,404 lm | 105W | 108 lm/W | 400W MH |

ORDERING GUIDE

*Options & Accessories are not shown. Please see the cut sheet on our website at ilp-inc.com or scan the QR code below.

| SERIES | WATTS | DRIVER | CCT | OPTIC | FINISH |
|----------------------------|-------|--------|-------------|-------|----------------|
| WPCS Full Cutoff Wall Pack | 28W | UNIV | 120-277V | 50 | (BLANK) Bronze |
| | 44W | | 40 | T3 | Black |
| | | | 30 | T4 | Silver |
| WPCM Full Cutoff Wall Pack | 28W | UNIV | 120-277V | | WHT White |
| | 44W | HV | 347-480V | | |
| | 75W | DD | Dual Driver | | |
| | 105W | | | | |



For more helpful information
SCAN ME

Gain access to further information by scanning the product's QR code.

SLIM WALL PACK

FEATURES

- Low-profile diecast aluminum housing
- Bronze polyester powder coat finish (standard)
- Custom and factory select colors available
- 90° adjustable type IV distribution or optional IDA fixed model
- Quick mount bracket standard for easy surface mount installation
- 120–277V universal voltage or 347V–480V high voltage
- Deep box 10W battery backup and cold weather battery options available
- Add optional field programmable bluetooth occupancy sensor
- Optional field adjustable output device (FAO) allows individual luminaire lumen output control
- 3000K, 4000K and 5000K CCT selectable via integral selector
- Calculated L70 >100,000 hours

SLIM
WALL PACK



SUITABLE APPLICATIONS

- Pedestrian Walkways
- Building Entrances
- Multi-use Facilities
- Industrial Facilities
- Parking Lots
- Storage Facilities
- Institutions
- Schools
- Loading Docks

LED SYSTEMS INFO

| PART NUMBER | LUMENS* | WATTS | LM/W | REPLACES |
|----------------|-----------|-------|----------|----------|
| SWP-2L-U-CCTS | 2,649 lm | 20W | 139 lm/W | 100W MH |
| SWP-3L-U-CCTS | 3,310 lm | 24W | 145 lm/W | 150W MH |
| SWP-5L-U-CCTS | 5,669 lm | 40W | 147 lm/W | 175W MH |
| SWP-8L-U-CCTS | 8,678 lm | 60W | 150 lm/W | 250W MH |
| SWP-10L-U-CCTS | 10,581 lm | 75W | 147 lm/W | 320W MH |

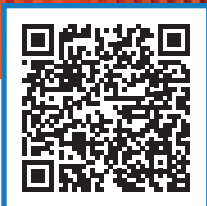
*Based off 4000K Correlated Color Temperature (CCT) selected via integral selector



ORDERING GUIDE

*Options & Accessories are not shown. Please see the cut sheet on our website at ilp-inc.com or scan the QR code below.

| SERIES | LUMENS | DRIVER | CCT | FINISH |
|--------------------|--------|-------------|--|------------|
| SWP Slim Wall Pack | 2L | U 120-277wV | CCTS Selectable CCT (5000K, 4000K, 3000K) 30 | BRZ Bronze |
| | 3L | HV 347-480V | | BLK Black |
| | 5L | | | WHT White |
| | 8L | | | SLV Silver |
| | 10L | | | |



For more helpful information
SCAN ME

Gain access to our brochure, cut sheets, and more by scanning the product's QR code.

OW SERIES WALL PACK

WALL PACKS
OWS/OWM/OWL

FEATURES

- Rugged diecast aluminum housing
- Bronze polyester powder coat finish (standard)
- Non-cutoff type iv distribution
- Borosilicate glass refractor reduces glare and provides uniform distribution (OWM/OWL)
- Optional hood for semi-cutoff type IV distribution
- Impact-resistant frosted low glare prismatic polycarbonate lens with UV stabilizers (OWS)
- Built in base bubble level for easy installation
- 120-277V universal voltage or HV 347-480V (OWM/OWL)
- Battery backup and cold weather battery options available
- 4000K and 5000K CCT
- Calculated L70 >75,000 Hours



OW SERIES

WALL PACK

SUITABLE APPLICATIONS

- Pathways
- Building Entrances
- Vehicle Ramps
- Schools
- Tunnels
- Stairways
- Loading Docks
- Public Areas

LED SYSTEMS INFO

| PART NUMBER | LUMENS (Max.) | WATTS (Max.) | LM/W | REPLACES |
|----------------------------|---------------|--------------|----------|----------|
| OWS-1L/2L/4L-U-CCTS-BRZ | 4,018 lm | 30W | 128 lm/W | 100W MH |
| OWM-3L/5L-U-CCTS-BRZ | 5,294 lm | 40W | 137 lm/W | 175W MH |
| OWL-5L/8L/10L-U-CCTS-BRZ | 10,915 lm | 80W | 137 lm/W | 320W MH |
| OWL-10L/13L/16L-U-CCTS-BRZ | 16,033 lm | 119W | 137 lm/W | 400W MH |



ORDERING GUIDE

*Options & Accessories are not shown. Please see the cut sheet on our website at ilp-inc.com or scan the QR code below.

| SERIES | LUMENS | DRIVER | CCT | FINISH |
|--------|--------------------------|------------------------------|--|------------|
| OWS | 1L/2L/4L | U 120-277V HV* 347-480V | CCTS Selectable CCT (5000K, 4000K, 3000K) | BRZ Bronze |
| OWM | 3L/5L | | | |
| OWL | 5L/8L/10L 10L/13L/16L | *Only available with OWM-OWL | | |



For more helpful information
SCAN ME

Gain access to our flyer, IES files and more by scanning the product's QR code.



CANOPY / PARKING GARAGE

OUTDOOR

SELECTION GUIDE



UFO PARKING GARAGE (UFO)

SQUARE CANOPY (CP)

SUITABLE APPLICATIONS

| | UFO | CP |
|--------------------|-----|----|
| PARKING GARAGE | ✓ | ✓ |
| CANOPY | ✓ | ✓ |
| ENTRANCE WAY | ✓ | ✓ |
| LOW BAY | ✓ | |
| WALKWAYS | ✓ | ✓ |
| LOADING DOCKS | ✓ | ✓ |
| STAIRWAYS | ✓ | ✓ |
| CAR PORTS | ✓ | ✓ |
| BUILDING PERIMETER | ✓ | ✓ |

FEATURES & PERFORMANCE

| | | |
|------------------|--|--|
| LUMEN PACKAGES | 3L-9L | 3L-9L |
| LPW (UP TO) | 146 LPW | 134 LPW |
| CRI | >80 | >80 |
| CCT OPTIONS | 3K, 4K, 5K | 4K, 5K |
| DISTRIBUTIONS | Wide & Narrow (Low Bay) | Wide & Medium |
| UPLIGHT (UP TO) | 10% Standard | 3% Standard |
| VOLTAGES | 120-277V or 347-480V | 120-277V or 347-480V |
| HOUSING | Round | Square |
| LENSING | Diffuse Polycarbonate | Diffuse Medium or Parking Garage Wide Polycarbonate Lenses |
| MOUNTING | Quick Surface Mount, Pendant, Trunnion | Quick Surface Mount, Pendant |
| BIRD CONE SHIELD | ✓ | |
| BATTERY BACKUP | 5W-16W; 14W Cold Temp -4°F | Remote Box 5W-12W; 14W Cold Temp -4°F |
| SURGE PROTECTION | 6kV | 2.5kV |
| LED LIFETIME | L70 > 100K | L70 > 50K |
| AMBIENT RANGE | -40 to +50°C | -40 to +40°C |
| RATINGS | IP66 | IP65 |
| BAA COMPLIANT | ✓ | |
| FINISHES | Bronze, Black, White, Silver | Bronze or White Standard |
| DLC | Standard & Premium | Premium |

BASIC CONTROLS

| | | |
|------------------|--|---|
| PHOTOCELL | Electronic Pencil Photocell | Electronic Pencil Photocell |
| OCCUPANCY SENSOR | Field Adjustable Bluetooth Programmable Sensor | Microwave or Drop Nipple Field Adjustable Bluetooth Programmable Sensor |

ADVANCE GROUPING CONTROLS

| | | |
|-----------|------------|--|
| ENLIGHTED | Integrated | |
| SYNAPSE | Integrated | |

UFO PARKING GARAGE

FEATURES

- Low-profile diecast aluminum housing
- Factory select finishes: bronze (BRZ), black (BLK), silver (SLV), and white(WHT)
- Custom colors finishes available
- Frosted polycarbonate lens reduces pixelation, glare, and distraction for drivers and pedestrians
- T5 wide distribution standard; optional T5 narrow low bay optic (LB) (concentrated distribution for atrium or exit/egress applications)
- Up to 10% uplight standard eliminates cave effect
- Mounting: quick surface mount bracket (standard), ½" pendant (standard), or optional trunnion mount bracket
- 120–277V universal voltage or 347–480V high voltage
- Battery backup and cold weather battery options available
- PIR Occupancy, photocell and bi-level dimming sensors available
- Wireless control integrated luminaire
- 3000K, 4000K and 5000K CCT
- Calculated L70 >100,000 hours



WHY UFO?

The UFO LED Parking Garage Luminaire was designed to interweave visual comfort, performance, and energy efficiency together in a unique industry aesthetic. The UFO's low-glare illumination features curved high-density LED chips coupled with diffuse lenses to minimize pixelation while delivering excellent layout performance. With up to 10% dedicated up-light standard, the UFO reduces the contrast between the luminaire and the ceiling eliminating the "cave" effect without any expensive additional modules. The purpose built UFO is suited for both new construction and retrofit applications providing up to 85% in energy savings compared to legacy metal halide luminaires.

SUITABLE APPLICATIONS

- Parking Garage
- Building Perimeter/ Security Lighting
- Entrances
- Stairways
- Walkways
- Loading Docks
- Car Ports

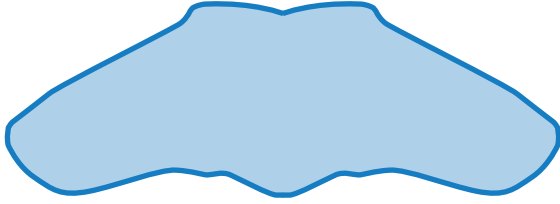


LED SYSTEMS INFO

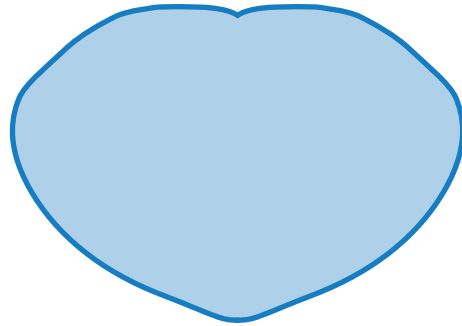
| PART NUMBER | LUMENS | WATTS | LM/W | REPLACES |
|---------------|----------|-------|----------|----------|
| UFO-28WLED | 3,450 lm | 27 W | 124 lm/W | 150W MH |
| UFO-40WLED | 4,985 lm | 40 W | 118 lm/W | 150W MH |
| UFO-58WLED | 7,135 lm | 57 W | 125 lm/W | 175W MH |
| UFO-75WLED | 9,266 lm | 76 W | 121 lm/W | 250W MH |
| UFO-28WLED-LB | 3,819 lm | 27W | 144 lm/W | 150W MH |
| UFO-40WLED-LB | 5,567 lm | 40 W | 139 lm/W | 150W MH |
| UFO-58WLED-LB | 7,260 lm | 57 W | 126 lm/W | 175W MH |
| UFO-75WLED-LB | 9,482 lm | 76 W | 124 lm/W | 250W MH |

DISTRIBUTIONS

Proper Parking Garage Illumination requires scalability and presents particular distribution challenges, the UFO is the missing piece of that complex puzzle meeting the most specific application requirements. Available in two distribution types, the T5 Wide distribution is ideal for both center of drive lane and sides of drive lane applications, while the T5 Narrow concentrated distribution is ideal for high mounting, atrium, or exit/egress applications.



WIDE



NARROW

MOUNTING OPTIONS

- Quick Mount Bracket - Standard base of installation when surface mounting to either the ceiling or junction box
- Pendant - ½" threaded pendant can be mounted through ½" coin plug on top of fixture (Supplied by other)
- TB - Trunion Mount Bracket



Quick Mount Bracket

Trunion Mount Bracket

ORDERING GUIDE

*Options & Accessories are not shown. Please see the cut sheet on our website at ilp-inc.com or scan the QR code below.

| SERIES | WATTS | DRIVER | CCT | DISTRIBUTION | MOUNTING | FINISH | |
|------------------------|--------|--------|----------|--------------|----------------|-------------------------------------|----------------|
| UFO UFO Parking Garage | 28WLED | UNIV | 120-277V | 50 | (BLANK) - Wide | (BLANK) Surface Mount | (BLANK) Bronze |
| | 40WLED | HV | 347-480V | 40 | LB - Narrow | PEN5 60" leads for Pendant Mounting | BLK Black |
| | 58WLED | | | 30 | | SCON Side Conduit | SLV Silver |
| | 75WLED | | | | | TRN Trunion | WHT White |



For more helpful information

SCAN ME

Gain access to our installation instructions, cut sheets and more by scanning the product's QR code.

SQUARE CANOPY & PARKING GARAGE

FEATURES

- Rugged low-profile diecast aluminum housing
- Factory select finishes: bronze (BRZ) or white (WHT)
- UV stabilized and impact resistant polycarbonate lenses
- Up to 3% uplight eliminates cave effect
- Quick mounting plate with hook on feature allow for easy installation
- Three 1/2" coin plugs on sides for conduit or photocell
- 4000K and 5000K CCT
- 120-277V universal voltage or 347-480V high voltage
- Optional microwave sensor for 360° occupancy detection
- Optional universal pencil photocell



SUITABLE APPLICATIONS

- Walkways
- Building Perimeter/ Security Lighting
- Loading Docks
- Entrances
- Stairways
- Car Ports
- Parking Garages

LED SYSTEMS INFO

| PART NUMBER | LUMENS | WATTS | LM/W | REPLACES |
|---------------|----------|-------|----------|----------|
| CP-3L-U-40 | 3,477 lm | 28W | 122 lm/W | 100W MH |
| CP-5L-U-40 | 5,090 lm | 40W | 126 lm/W | 150W MH |
| CP-7L-U-40 | 7,328 lm | 59W | 125 lm/W | 175W MH |
| CP-9L-U-40 | 8,192 lm | 66W | 124 lm/W | 250W MH |
| CP-3L-U-40-PG | 3,779 lm | 28W | 135 lm/W | 100W MH |
| CP-5L-U-40-PG | 5,093 lm | 39W | 130 lm/W | 150W MH |
| CP-7L-U-40-PG | 7,602 lm | 59W | 129 lm/W | 175W MH |
| CP-9L-U-40-PG | 8,455 lm | 65W | 130 lm/W | 250W MH |

ORDERING GUIDE

*Options & Accessories are not shown. Please see the cut sheet on our website at ilp-inc.com or scan the QR code below.

| SERIES | LUMENS | DRIVER | CCT | LENS | FINISH |
|-----------------------------------|----------------------|---------------------------|----------|--|-----------------------------|
| CP Square Canopy & Parking Garage | 3L 5L 7L 9L | U 120-277V HV 347-480V | 50 40 | (BLANK) Diffuse Medium PG Parking Garage Wide | (BLANK) Bronze WHT White |



For more helpful information

SCAN ME

Gain access to our flyer, cut sheets, and more by scanning the product's QR code.

NOTES



Visit us online at
ILP-INC.COM

If you have any questions regarding products in this section, please go online to ilp-inc.com or reach out to one of our sales reps for more information and pricing.



BOLLARDS

OUTDOOR

BOLLARDS

FEATURES

- Flat top or dome top design with aluminum cone reflector
- 42" extruded aluminum housing with flush mounting base and vandal-resistant screws, optional cut down
- Powder coat finish over a chromate conversion coating, available in black, white, silver or bronze
- Custom color options available
- Stainless steel housing available for domed top only (SS)
- Internal ballast tray for easy maintenance
- Clear polycarbonate lens
- Multiple beam spread options: 90°, 180° and 270°
- 8" anchor bolts (standard), optional 4", 12" and 15"
- 120-277V universal voltage
- 5 Year warranty
- ETL listed for wet locations



BOLLARDS
BLDT/BLFT

SUITABLE APPLICATIONS

- Walkways
- Boardwalks
- Parking Lots

LED SYSTEMS INFO

| PART NUMBER | LUMENS | WATTS | LM/W | REPLACES |
|------------------------|----------|-------|---------|----------|
| BLFT-15WLED-UNIV-4000K | 1,402 lm | 17W | 83 lm/W | 70W MH |
| BLDT-15WLED-UNIV-4000K | 1,221 lm | 16W | 74 lm/W | 70W MH |

ORDERING GUIDE

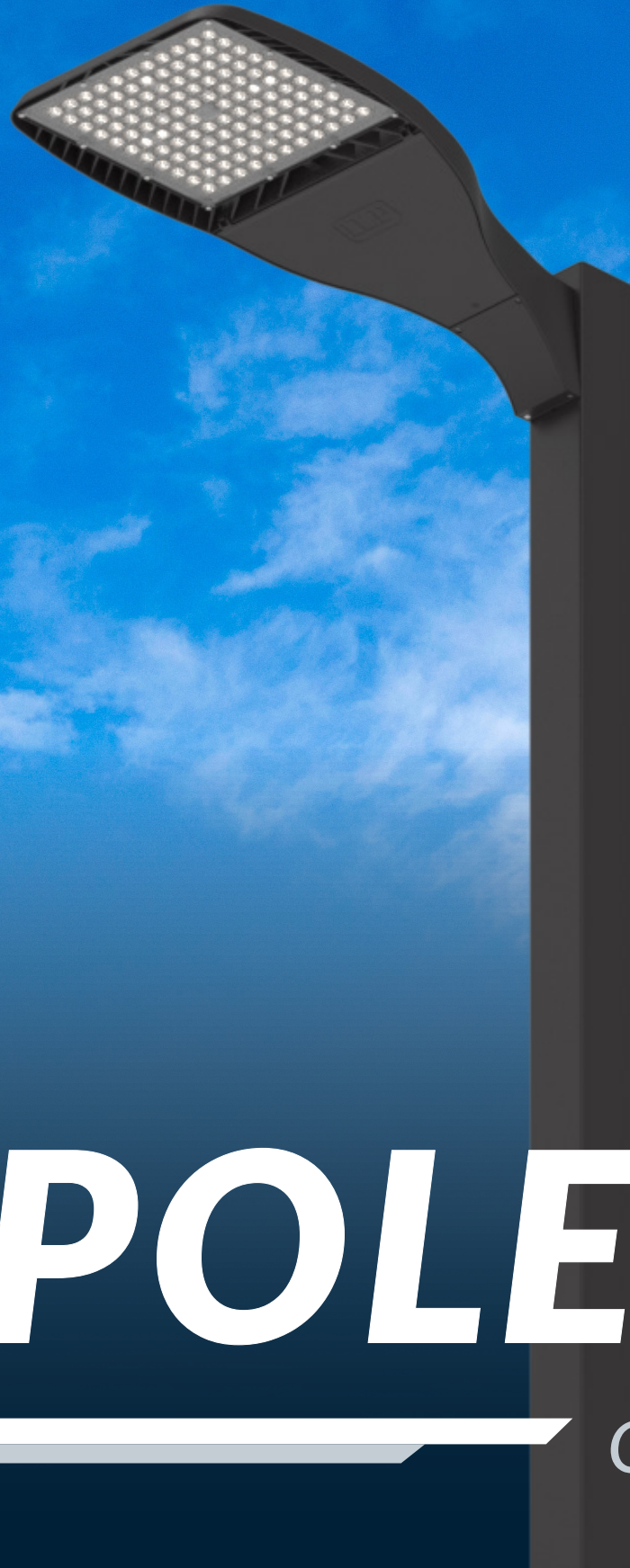
*Options & Accessories are not shown. Please see the cut sheet on our website at ilp-inc.com or scan the QR code below.

| SERIES | WATTS | DRIVER | COLOR | FINISH |
|-----------------------|--------|----------------------|-------|--|
| BLFT Flat Top Bollard | 15WLED | UNIV 120-277V Driver | 4000K | (BLANK) Bronze BLK Black SLV Silver WHT White SS Stainless Steel |
| BLDT Dome Top Bollard | | | | |



For more helpful information
SCAN ME

Gain access to further information by scanning the product's QR code.



POLES

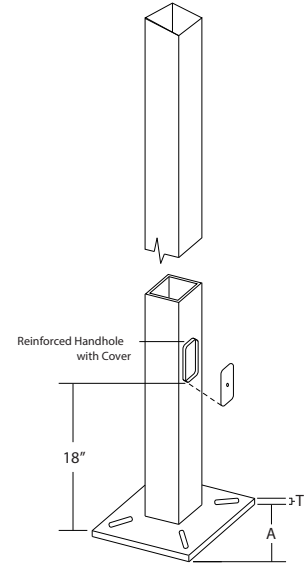
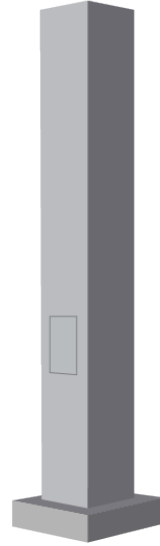
OUTDOOR

SQUARE STEEL POLES

POLES
SS POLES

FEATURES

- Straight 4", 5", or 6" square steel poles
- Shaft – 55,000 p.s.i minimum yield
- Two-piece base covers included
- Base plates – 36,000 p.s.i. minimum yield
- Reinforced handholes with grounding lug and removable cover
- Top tenon or drill pattern with removable pole cap
- Four galvanized anchor bolts with galvanized hardware Included
- Anchor bolt templates included
- Pre-ship anchor bolts with template – prepay freight and add
- Pole vibration dampeners available upon request



POLE DRILLING TEMPLATES

| DRILL LEGEND | | | | | |
|--------------|------------------------------------|--|-----|-----------------------------|--|
| -1 | Single Fixture Drill Pattern | | -3T | Three Fixture Drill Pattern | |
| -2 | Two Fixtures at 180° Drill Pattern | | | | |
| -2L | Two Fixtures at 90° Drill Pattern | | | | |
| | | | -4 | Four Fixtures Drill Pattern | |

ORDERING GUIDE

*Options & Accessories are not shown. Please see the cut sheet on our website at ilp-inc.com or scan the QR code below.

| SERIES | POLE TYPE | SIZE (in) | HEIGHT (ft) | | | GAUGE | DRILL PATTERN | DRILL LEGEND OR TENON | FINISH | |
|--------|-----------|-----------|-------------|----|----|-------|---------------|-----------------------|--------|-----|
| ILPOLE | SS | 4 | 10 | 20 | 30 | 11 | SKY = SKYLINE | 1 | BRZ | |
| | | | 5 | 11 | 21 | 31 | 7 | VWP = VIEWPOINT | 2 | BLK |
| | | | | 6 | 12 | 22 | | | 32 | 2L |
| | | 13 | 23 | | 33 | 3T | WHT | | | |
| | | 14 | 24 | | 34 | 4 | CC | | | |
| | | 15 | 25 | | 35 | TN2 | | | | |
| | | 16 | 26 | | 36 | | | | | |
| | | 17 | 27 | | 37 | | | | | |
| | | 18 | 28 | | 38 | | | | | |
| | | 19 | 29 | | 39 | | | | | |



For more helpful information

SCAN ME

Gain access to our product cut sheet and more by scanning the product's QR code.

ROUND STEEL POLES

FEATURES

- Straight 3", 4", 4.5", or 5" round steel poles
- Shaft – 42,000 p.s.i minimum yield
- Two-piece base covers included
- Reinforced handholes with grounding lug and removable cover
- Top tenon or drill pattern with removable pole cap
- Four galvanized anchor bolts with galvanized hardware Included
- Anchor bolt templates included
- Pre-ship anchor bolts with template – prepay freight and add
- Pole vibration dampeners available upon request



POLE DRILLING TEMPLATES

| DRILL LEGEND | | | | | |
|--------------|------------------------------------|--|-----|-----------------------------|--|
| -1 | Single Fixture Drill Pattern | | | | |
| -2 | Two Fixtures at 180° Drill Pattern | | -3T | Three Fixture Drill Pattern | |
| -2L | Two Fixtures at 90° Drill Pattern | | -4 | Four Fixtures Drill Pattern | |

ORDERING GUIDE

*Options & Accessories are not shown. Please see the cut sheet on our website at ilp-inc.com or scan the QR code below.

| SERIES | POLE TYPE | SIZE (in) | HEIGHT (ft) | GAUGE | DRILL PATTERN | DRILL LEGEND OR TENON | FINISH | |
|--------|------------------|-----------|-------------|-------|---------------|-----------------------|--------|-----|
| ILPOLE | SR (Straight) | 3 | 10 | 20 | 11 | SKY=Skyline | 1 | BRZ |
| | | 4 | 11 | 21 | | | 2 | BLK |
| | Round) | 4.5 | 12 | 22 | | VWP=Viewpoint | 2L | SLV |
| | | 5 | 13 | 23 | | 3T | WHT | |
| | | | 14 | 24 | | 4 | | |
| | | | 15 | 25 | | TN2 | | |
| | | | 16 | 26 | | | | |
| | | | 17 | 27 | | | | |
| | | | 18 | 28 | | | | |
| | | | 19 | 29 | | | | |



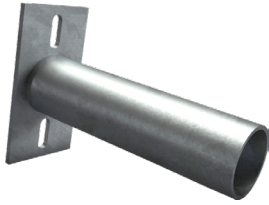
For more helpful information

SCAN ME

Gain access to our product cut sheet and more by scanning the product's QR code.

BRACKETS

SIDE TENON BRACKETS



WALL MOUNT BRACKETS



ROUND POLE ADAPTERS



SPOKE BRACKETS



BULLHORN BRACKETS



WOODPOLE BRACKETS



SQUARE POLE ADAPTERS



ROUND SQUARE ROUND BRACKETS



POST TOP TENON ADAPTERS



For more helpful information

SCAN ME

Gain access to our product cut sheet and more by scanning the product's QR code.

Published March 2022



*“YOUR NUMBER ONE SOURCE
FOR ENERGY EFFICIENT LIGHTING”*

WWW.ILP-INC.COM | 407-478-3759
An ILLUMUS Brand

